

# VALLEY HOUSE GALLERY & SCULPTURE GARDEN

Booth F14  
Dallas Art Fair



Valley House Gallery Booth  
2025 Dallas Art Fair

Fashion Industry Gallery  
1807 Ross Avenue  
Dallas, Texas 75201

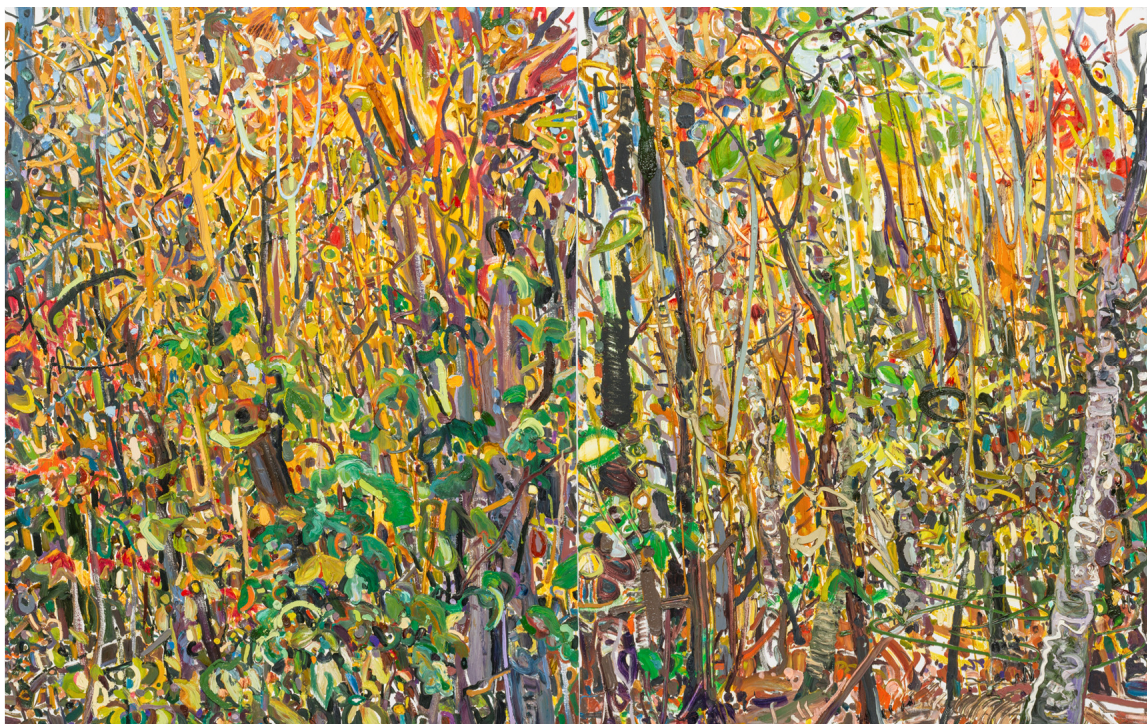
Friday, April 11, 11:00 AM - 7:00 PM  
Saturday, April 12, 11:00 AM - 7:00 PM  
Sunday, April 13, 11:00 AM - 5:00 PM

Valley House Gallery & Sculpture Garden  
6616 Spring Valley Road, Dallas, TX 75254  
972-239-2441  
[gallery@valleyhouse.com](mailto:gallery@valleyhouse.com)  
[www.valleyhouse.com](http://www.valleyhouse.com)

Scroll down to see a Preview of the booth



**Curt Brill (American, Born 1952)**  
*Dancer*, 1986  
Foundry Proof  
bronze  
63 7/8 x 23 3/16 x 19 1/16 inches



**Lilian Garcia-Roig (Cuban/American, Born 1966)**

*Hyperbolic Nature*

oil on canvas

60 x 96 inches





**Jim Woodson (American, Born 1941)**  
*Discerned Inward Temporal Saturated Materializations, 2018*  
oil on canvas  
60 x 84 inches





**Henry Finkelstein (American, Born 1958)**

*Stream by the Mill at Pommerit, 2023*

oil on linen

48 1/4 x 49 3/4 inches





Allison Gildersleeve (American, Born 1970)

*Of What Then, 2021*

oil and acrylic on canvas

52 x 50 inches





**Otis Huband (American, Born 1933)**

*Children at the Shore, 2024*

oil on canvas

54 7/8 x 64 1/4 inches



**Bob Stuth-Wade (American, Born 1953)**

*Trees at Crossroad, 2024*

oil on linen

36 x 48 inches





**Scott Gentling (American, 1942-2011)**

*The Apples*, 1965

dry brush watercolor on paper

15 11/16 x 23 1/8 inches



**Kirk Hayes (American, Born 1958)**  
*Starting a New Painting*, circa 1993  
oil on wood  
30 3/4 x 24 1/8 inches





**Brian Cobble (American, Born 1953)**

*Bridesmaids*, 2024

pastel

22 3/8 x 32 7/8 inches



Sedrick Huckaby (American, Born 1975)  
*Big Momma's House: Early Fall*, 2012-2013  
oil on canvas mounted on panel  
10 x 30 inches





Robert D. Cocke (American, Born 1950)

*Song*, 2025

oil on panel

48 x 24 inches



**David Everett (American, Born 1950)**

*Vixen*, 2025

polychromed linden wood

19 3/4 x 27 1/2 x 7 1/2 inches





**David Collins (American, Born 1966)**  
*Signalman's Sleep*, 2019  
 acrylic and paper on canvas  
 60 x 60 inches



**Anita Huffington (American, 1934-2025)**

*Phoenix*, 2001

edition 2/9

bronze

23 1/4 x 6 x 12 1/2 inches

**BIBLIOGRAPHY:**

"Anita Huffington," Photographs by David Finn with Introduction by Townsend Wolfe and Essay by Amei Wallach, (New York, New York: Ruder Finn Press, 2007), pages 226-229.





**Alex Corno (Italian, Born 1960)**

*It's me* - 8, 2022

painted iron

13 1/4 x 9 1/4 x 8 3/4 inches



**Barnaby Fitzgerald (American, Born 1953)**  
*And She Forgot the Blue Above the Trees, 2024*  
oil on canvas  
29 1/8 x 25 1/4 inches





**Gail Norfleet (American, Born 1947)**

*Still Life with Bois D'Arc Tree, 2023*

acrylic on two plexiglass panels

43 1/4 x 37 x 2 inches



**David A. Dreyer (American, Born 1958)**

*Sea to Another Day~*

*Cold Mountain*

*Buoyant Wind*

*Flower Moon*

*Night's Divide*

*Morning Dew*

*Does it Really Matter~*

*Anyway, 2022-2025*

oil and graphite on canvas

32 x 24 inches





Lindy Chambers (American, Born 1949)

*After George Stubbs, 2024*

acrylic on canvas

48 x 48 inches



Miles Cleveland Goodwin (American, Born 1980)

*Thin Ice*, 2025

oil on canvas

16 x 20 inches





**Mary Vernon (American, Born 1942)**

*12 Swimming Pools, 2024*

oil on Yupo

26 x 40 inches





**Ying Li (Chinese/American, Born 1951)**

*Destressed Tulips, 2022*

oil on linen

24 1/2 x 14 inches



Amy Werntz (American, Born 1979)

*First Watch*, 2022

oil on Masonite panel

16 x 16 inches



**Michael O'Keefe (American, Born 1977)**

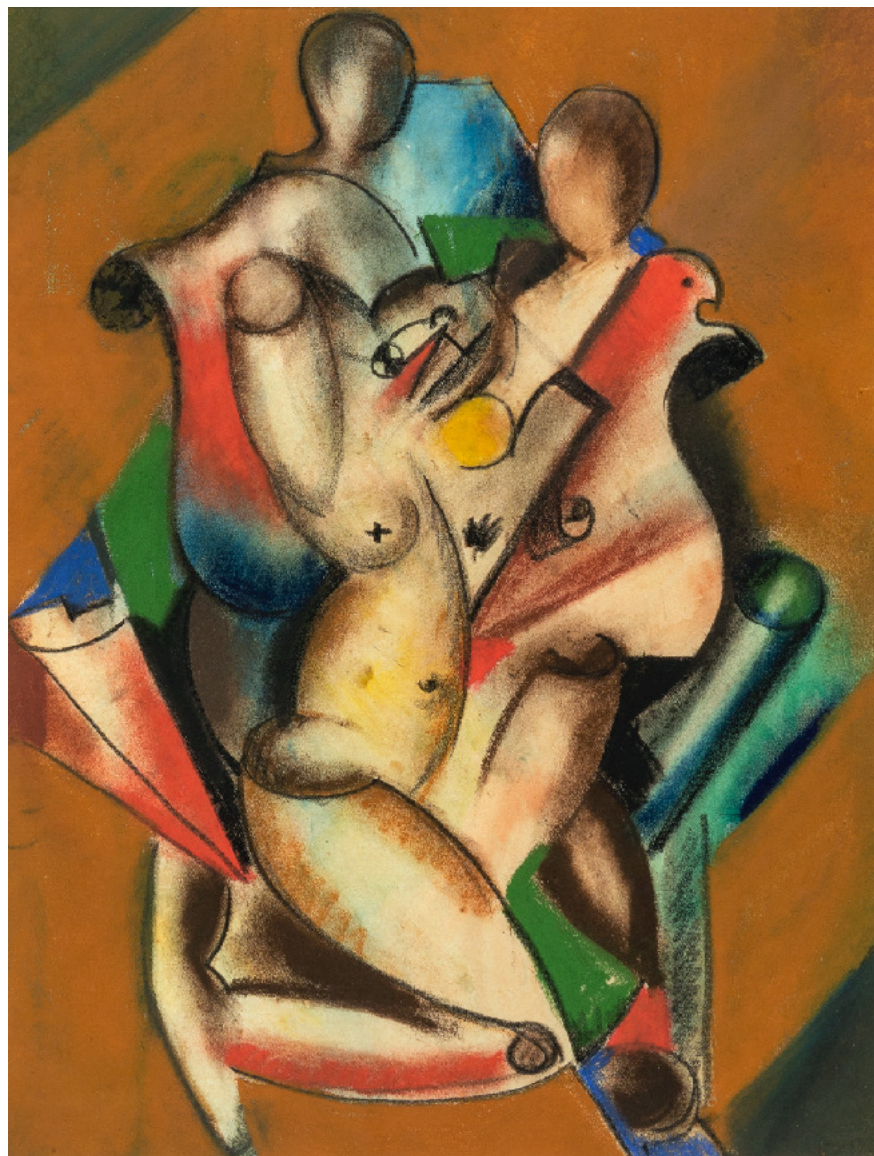
*Archaic Mask I*, 2024

hydrocal with pigment on hydrostone pedestal

17 1/2 x 8 5/8 x 7 1/8 inches

62 7/8 x 10 1/2 x 8 3/4 inches including pedestal



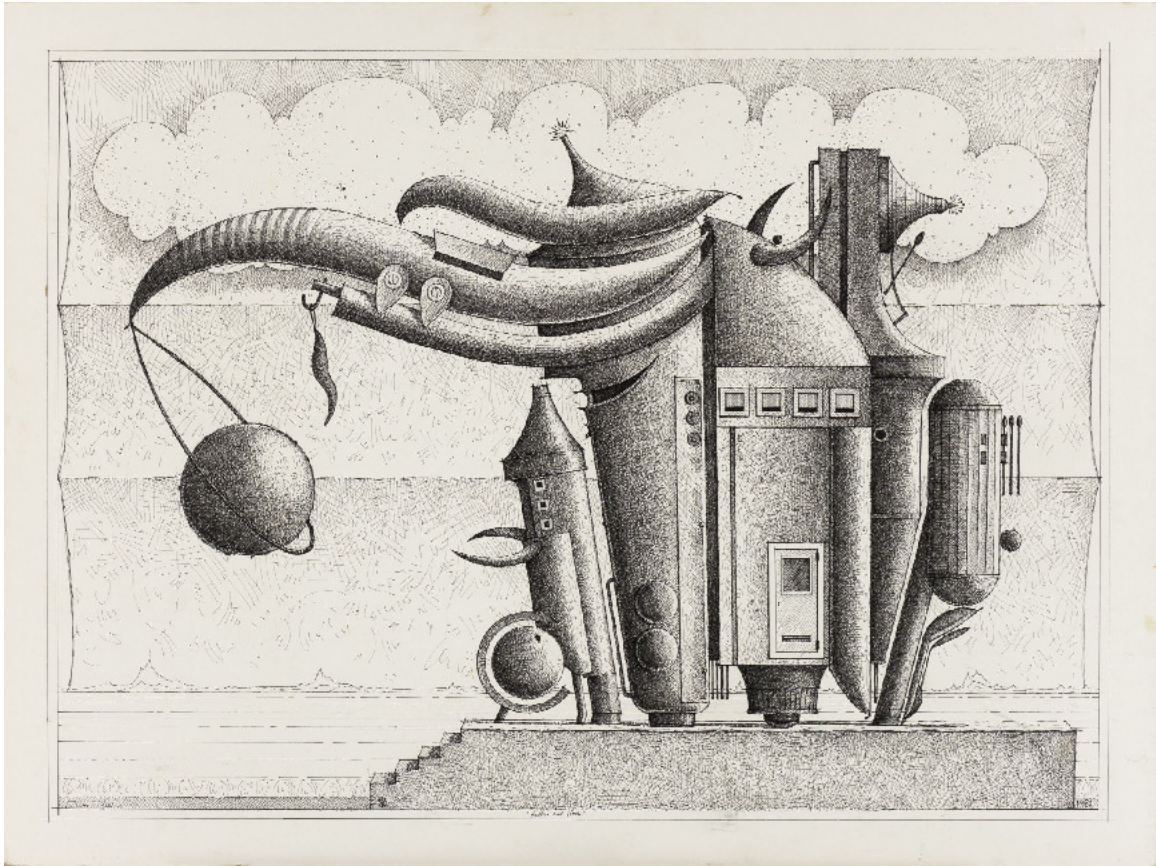


Edmund D. Kinzinger (German/American, 1888-1963)

*Untitled*, 1920

conte and pastel on paper

11 1/4 x 8 3/4 inches



**Valton Tyler (American, 1944-2017)**

*Father and Son*, 1981

pen and ink on Crescent Water Color rag board

26 5/8 x 36 5/8 inches



**Kathy Boortz (American, Born 1948)**  
*Autumn Owl*, 2025  
found wood, terracotta, steel, beads and acrylic paint  
23 x 19 1/2 x 10 5/8 inches





Vera Barnett (American, Born 1957)

*O-Tee*, 2024

oil on panel

24 x 24 inches



**Carol A. Cook (American, Born 1950)**

*Ritchie*, 2021

soldate stoneware, low-temperature glazes, oxides, engobes, and underglazes

9 x 6 1/4 x 8 3/8 inches

FIRST PRIZE:

"National Sculpture Society Community Exhibition: The NSS in Texas and Oklahoma", Fort Worth Community Arts Center, Fort Worth, Texas, December 2, 2022 - January 28, 2023.





**John Cobb (American, Born 1954)**  
*The Prized Calf*, 2024  
gouache on gessoed panel in found frame  
8 3/4 x 15 1/8 inches





Emily LaCour (American, Born 1990)

*This Crowded Table*, 2024

oil on panel

24 1/8 x 26 3/4 inches



Edward G. Eisenlohr (American, 1872-1961)

*Untitled,*

graphite, watercolor, and gum arabic on paper

7 5/8 x 9 3/4 inches image size

9 1/4 x 12 3/8 inches paper size





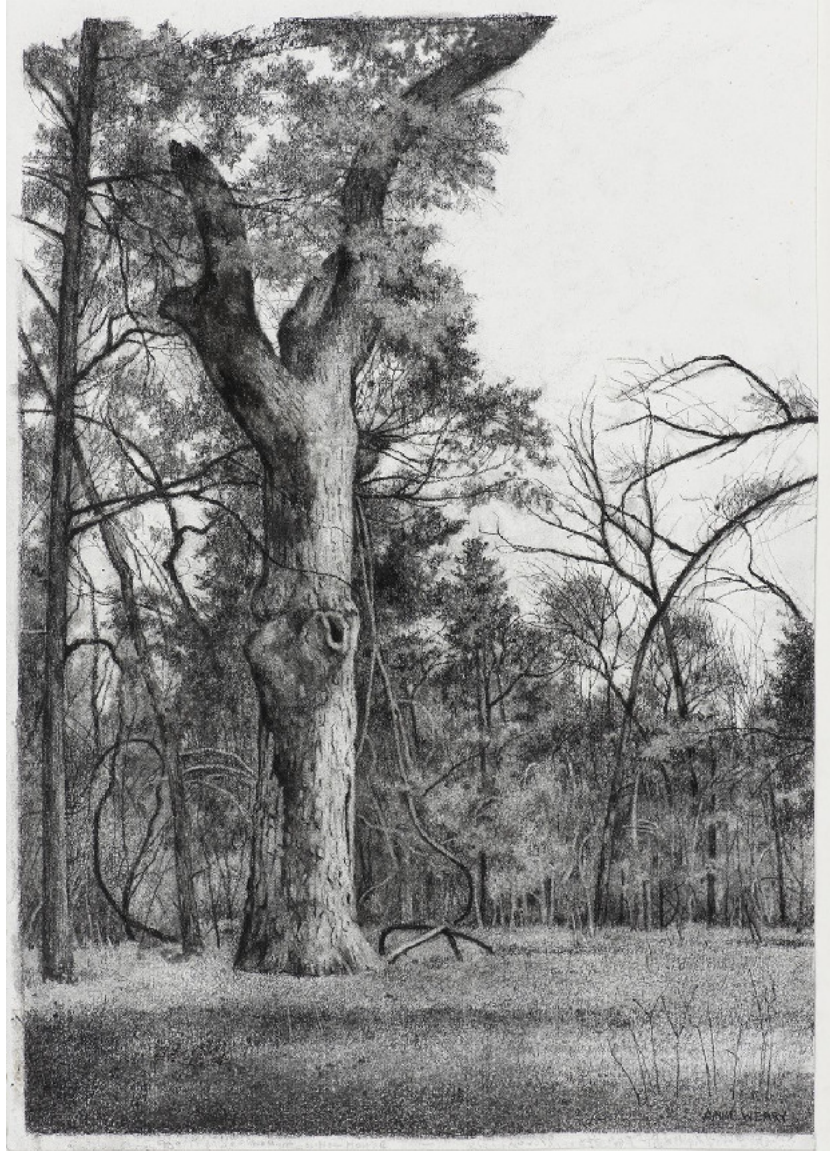
**Bart Forbes (American, Born 1939)**

*Citrus Fruit*, 2003

oil on panel

15 x 18 inches





**Anne C. Weary (American, Born 1952)**

*Ancient Pecan*, 2021

charcoal on paper

15 x 10 1/2 inches paper size



**Mark Messersmith (American, Born 1955)**

*Above and Below: The Darter, 2023*

acrylic and mixed media on wood

19 3/8 x 14 11/16 x 6 13/16 inches





**Chaco Terada (Japanese/American, Born 1963)**

*Dance in the Woods, 2021*

archival pigment print on layers of silk organza with sumi ink and mineral pigments  
14 x 10 1/2 inches



**Deborah Ballard (American, Born 1951)**

*Signs of the Time Series: Maquette II, I Vote = I Vote, 2020/2021*

unique bronze with acid patina and wax

14 3/8 x 5 x 3 1/2 inches





**Lloyd Brown (American, Born 1957)**

*Farm West of the S Spring Lake Rd Intersection, Harvey County, Kansas, U.S. Highway 50, 2022*

acrylic on a shaped rag board panel faced with BFK Rives printmaking paper, artist-made frame

4 1/2 x 15 15/16 x 1 7/16 inches



Everett Franklin Spruce (American, 1908-2002)

*Untitled*

conté crayon on paper

6 5/8 x 4 1/4 inches image size

8 x 5 1/4 inches paper size





**Mike Cunningham (American, Born 1943)**  
*Untitled III*  
edition 2/20  
bronze sculpture with steel base  
13 3/8 x 6 3/4 x 6 1/4 inches including base



**Cindi Holt (American, Born 1952)**

*Red Room, 2004*

colored pencil on Bristol wove paper

6 1/8 x 5 inches image size





**David H. Gibson (American, Born 1939)**

*Lyric Tree, Jackson Hill Park, Angelina National Forest, Texas, 1992, #0166*

edition 3/48

gelatin silver print, selenium toned

15 1/8 x 19 1/16 inches



David Everett (American, Born 1950)

*Cardinal*, 2023

edition 11/20

color woodcut on paper

8 x 10 inches image size