

Bob Stuth-Wade

No Separate Piece

January 17 – February 28, 2026

Opening Reception: Saturday, January 17, 4:00pm-6:30pm

Artist Talk: Saturday, February 7, 11:00am

Valley House Gallery & Sculpture Garden
6616 Spring Valley Road, Dallas, TX 75254
972-239-2441
www.valleyhouse.com

Beginning a painting is complicated. There are many things to consider. Value, shape, color, texture, materials, and meaning. As a painting progresses all of these elements "come together" until finally the pieces become one visual statement. There is satisfaction in this gentle catharsis of beginning with complication and ending by completion in unity. This is one of the reasons I paint. Every painting takes me from confusion to clarity. I meditate in the mornings for the same reason. Sitting in silence before the sun comes up, my own confusion is apparent. Slowly, it dissipates and resolves into a way of seeing where self and the world are not in opposition. Painting is a practice that condenses disparate experience into a coherent, visual language. —BS-W

Valley House Gallery is honored to present our twelfth solo exhibition of works by Texas artist Bob Stuth-Wade. Stuth-Wade's self-directed art education began under Perry Nichols while a student at Jesuit College Preparatory School of Dallas. His work has been written about by Eleanor Jones Harvey of the Smithsonian American Art Museum, Frederick Turner for American Arts Quarterly, Judy Deaton for The Grace Museum, and Rebecca Lawton for his 2019 catalogue. Museum exhibitions include San Angelo Museum of Fine Arts, The Grace Museum, Jesuit Dallas Museum, Museum of the Big Bend, and Old Jail Art Center. *The Comfort of Trees* catalogue was published in 2025.

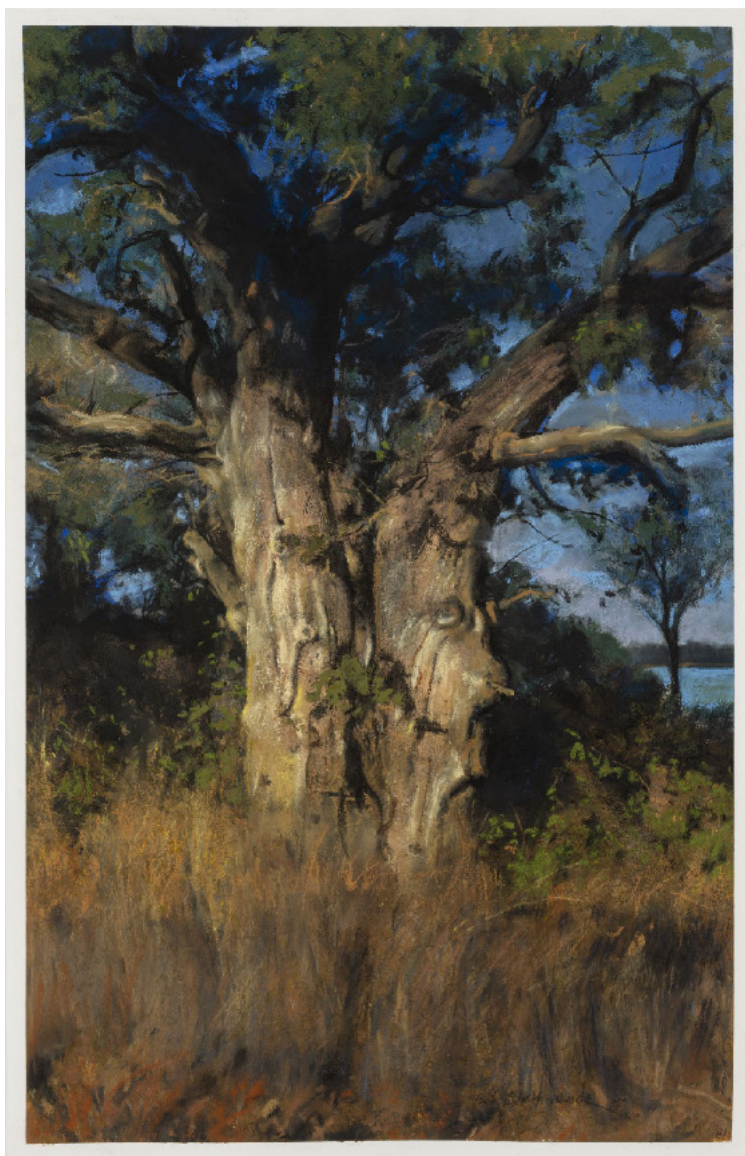
SCROLL DOWN TO PREVIEW THE PAINTINGS



Bob Stuth-Wade
Near Croton Springs, 2025
oil on linen
48 x 60 inches



Bob Stuth-Wade
West Side Big Bend, 2024
oil on linen
30 x 36 inches



Bob Stuth-Wade
Beside the Equestrian Trail, 2022
acrylic, charcoal, and pastel on primed paper
38 3/8 x 24 1/2 inches



Bob Stuth-Wade
Near Costolon, 2024
oil on canvas panel
20 x 30 inches



Bob Stuth-Wade
Cerro Castellan from the North, 2024
watercolor on paper
28 1/2 x 20 1 inches



Bob Stuth-Wade
Standing Alone, 2024
watercolor on paper
27 7/16 x 20 inches



Bob Stuth-Wade
Shadows and Las Tres Gunas, 2024
watercolor on paper
20 3/16 x 26 15/16 inches



Bob Stuth-Wade
Leaving Costolon, 2024
watercolor on paper
24 x 20 3/8 inches



Bob Stuth-Wade
Cerro Castellan, 2024
watercolor on paper
18 1/2 x 26 1/4 inches



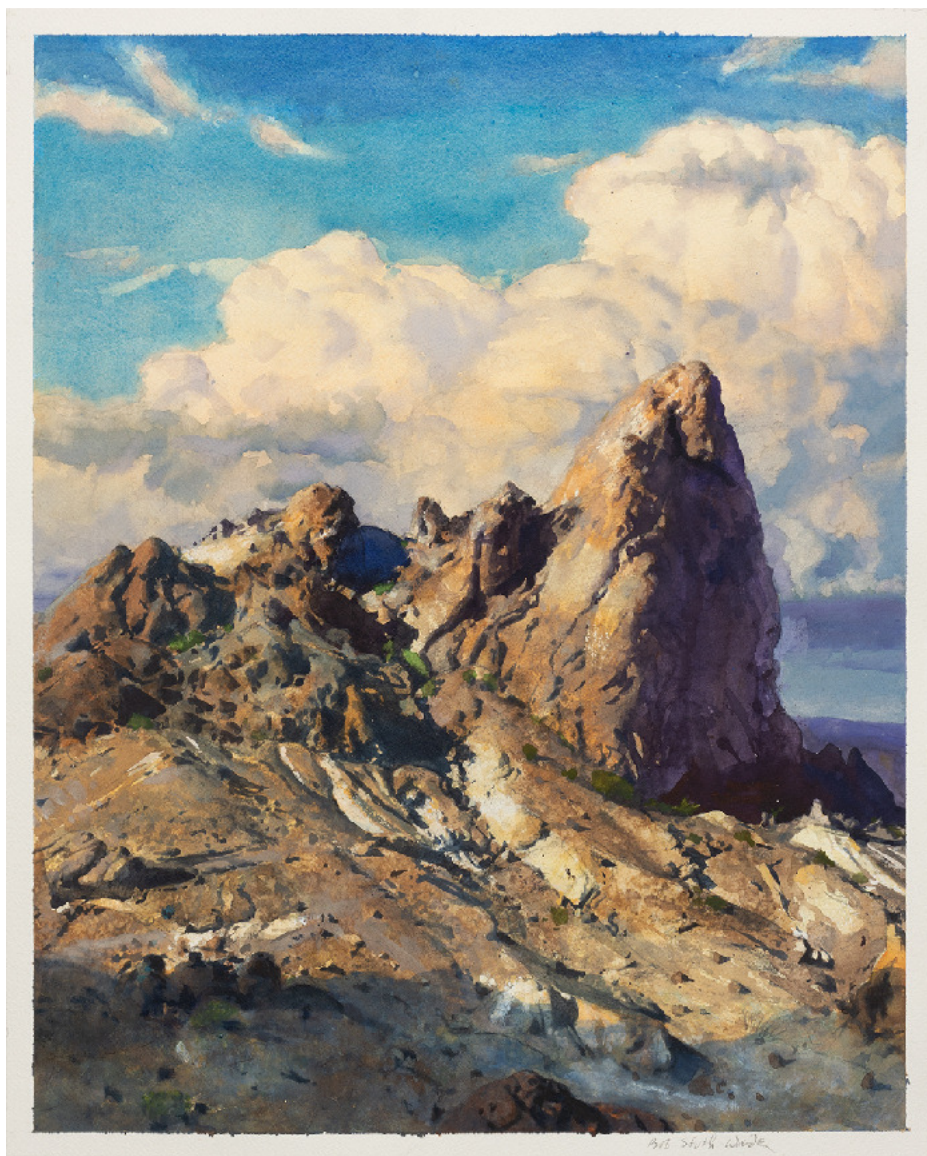
Bob Stuth-Wade
Burro Mesa Pourroff Trail, 2025
oil on aluminum panel
18 x 24 inches



Bob Stuth-Wade
Distant Storm, Canyon de Chelly, 2024
watercolor on paper
21 5/16 x 15 3/4 inches



Bob Stuth-Wade
Mariscal Canyon, 2022
oil on linen
20 1/8 x 16 1/8 inches



Bob Stuth-Wade
Between Cloud and Shadow, 2024
watercolor on paper
20 1/8 x 16 inches



Bob Stuth-Wade
Walking the Wash, 2024
watercolor on paper
20 x 16 inches



Bob Stuth-Wade
Cliffs, Sulphur Springs Fish Camp, 2024
oil on canvas on panel
16 x 20 inches



Bob Stuth-Wade
Proctor in Flood, 2022
oil on canvas on panel
16 x 20 inches



Bob Stuth-Wade
Chisos from the North, 2022
oil on canvas panel
12 x 24 inches



Bob Stuth-Wade
Pipes Mountain, 2022
oil on linen panel
12 x 24 inches



Bob Stuth-Wade

Overcast Afternoon, Proctor Lake, 2022

oil on linen panel

12 x 24 inches



Bob Stuth-Wade
Road to Wichita Falls, 2022
oil on linen panel
12 x 24 inches



Bob Stuth-Wade
View from Soto Vista, 2022
oil on linen panel
12 x 24 inches



Bob Stuth-Wade
Las Tres Gunas from Costollon, 2022
oil on canvas on panel
16 x 16 inches



Bob Stuth-Wade

The Window from Ross Maxwell Scenic Drive, 2024

watercolor on paper

12 1/8 x 18 inches



Bob Stuth-Wade
Beloved Tree, 2023
oil on panel
18 x 12 inches



Bob Stuth-Wade
Other Side of Trail, 2022
oil on panel
18 x 12 inches



Bob Stuth-Wade
View from Marsha's, 2022
oil on aluminum panel
12 x 16 inches



Bob Stuth-Wade
Back of Martin's Shop, 2022
oil on panel
12 x 16 inches



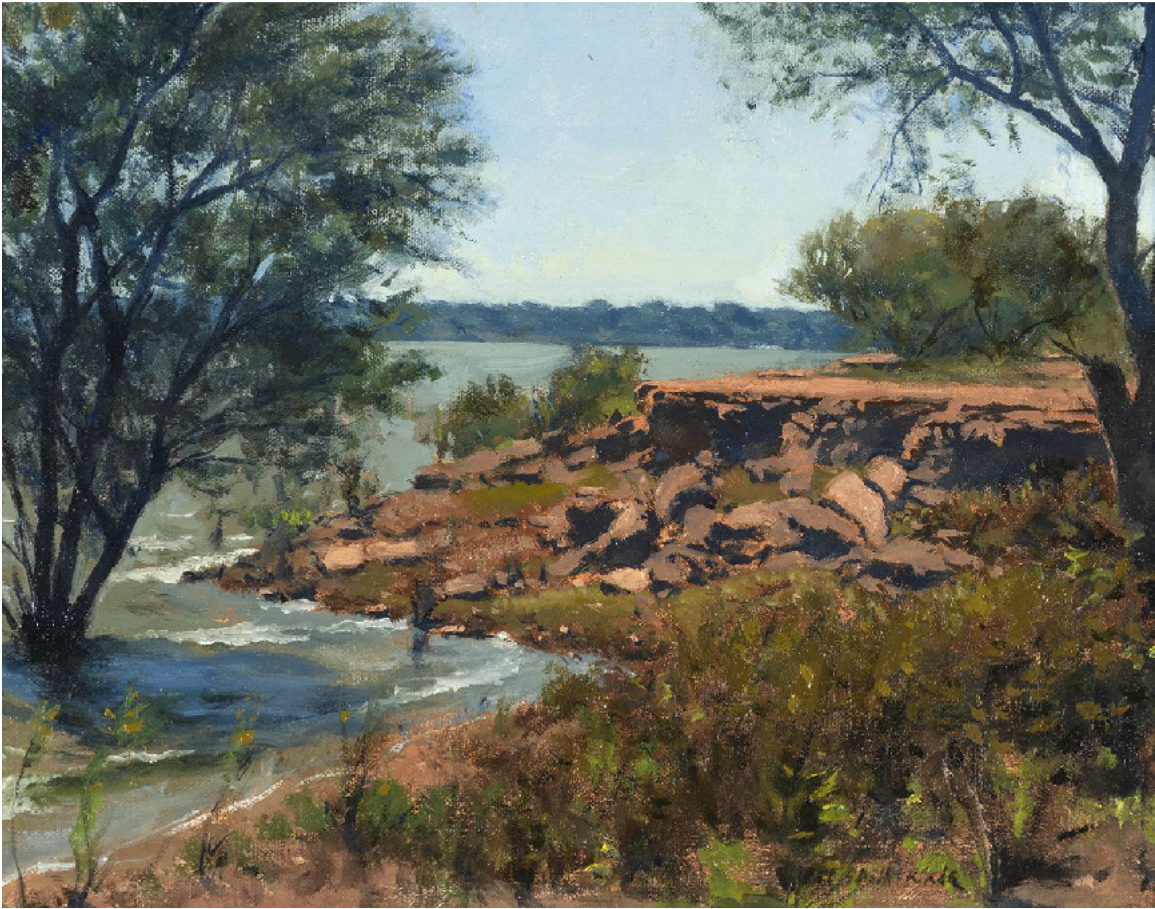
Bob Stuth-Wade
To the Lake, Motheral, 2023
oil on panel
11 x 15 inches



Bob Stuth-Wade
Road, Motheral, 2023
oil on panel
11 x 15 inches



Bob Stuth-Wade
Light Tangle, 2024
oil on canvas
11 1/8 x 14 1/8 inches



Bob Stuth-Wade
Along the Shore, Proctor, 2022
oil on canvas on aluminum panel
11 x 14 inches



Bob Stuth-Wade
RV Park, Dublin, 2022
oil on linen on panel
11 x 14 inches



Bob Stuth-Wade
Clouds from Airport, Dublin, 2022
oil on aluminum panel
11 x 14 inches



Bob Stuth-Wade
Lone Tree, Proctor, 2021
oil on canvas on aluminum panel
14 x 11 inches



Bob Stuth-Wade
Cerro Castellan, A.M., 2022
oil on aluminum panel
11 x 14 inches



Bob Stuth-Wade
Proctor Oak, 2022
oil on canvas panel
12 x 11 7/8 inches



Bob Stuth-Wade
Main Tree, Overcast, 2023
oil on canvas panel
10 1/8 x 13 1/8 inches



Bob Stuth-Wade
Far End Sulphur Springs, 2020
acrylic on paper on panel
10 1/8 x 12 inches



Bob Stuth-Wade
Prairie Creek Ranch, Looking East, 2022
oil on panel
8 x 15 inches



Bob Stuth-Wade
First Motheral, 2023
oil on panel
7 3/4 x 14 1/2 inches



Bob Stuth-Wade
Spring, Proctor Lake, 2024
glazed gouache on canvas panel
12 x 9 inches



Bob Stuth-Wade
Sole Survivor, 2022
oil on canvas panel
12 x 9 inches



Bob Stuth-Wade
Robert's Apple Orchard, 2022
oil on linen panel
9 x 12 inches



Bob Stuth-Wade
Into Bryan's, 2022
oil on aluminum panel
9 x 12 inches



Bob Stuth-Wade
Windy Day Below Jimmy's, 2022
oil on linen panel
9 x 12 inches



Bob Stuth-Wade
Sun Glare on the Colorado, 2022
oil on linen panel
9 x 12 inches



Bob Stuth-Wade
Windy Day, Croton Springs Camp, 2022
oil on linen panel
9 x 12 inches



Bob Stuth-Wade
Up Hidden Hollow Road, 2022
oil on linen panel
12 x 9 inches



Bob Stuth-Wade
Tree Before It's Fall, 2022
oil on linen panel
12 x 9 inches



Bob Stuth-Wade
Stones on Shore, Proctor, 2022
oil on linen panel
12 x 9 inches



Bob Stuth-Wade
First Painting of Prairie Creek Ranch, 2022
oil on aluminum panel
9 x 12 inches



Bob Stuth-Wade
Cesar's Walk, 2020
oil on canvas panel
8 7/8 x 11 7/8 inches



Bob Stuth-Wade
Back Road, Big Bend, 2024
watercolor on paper
7 1/2 x 13 1/4 inches



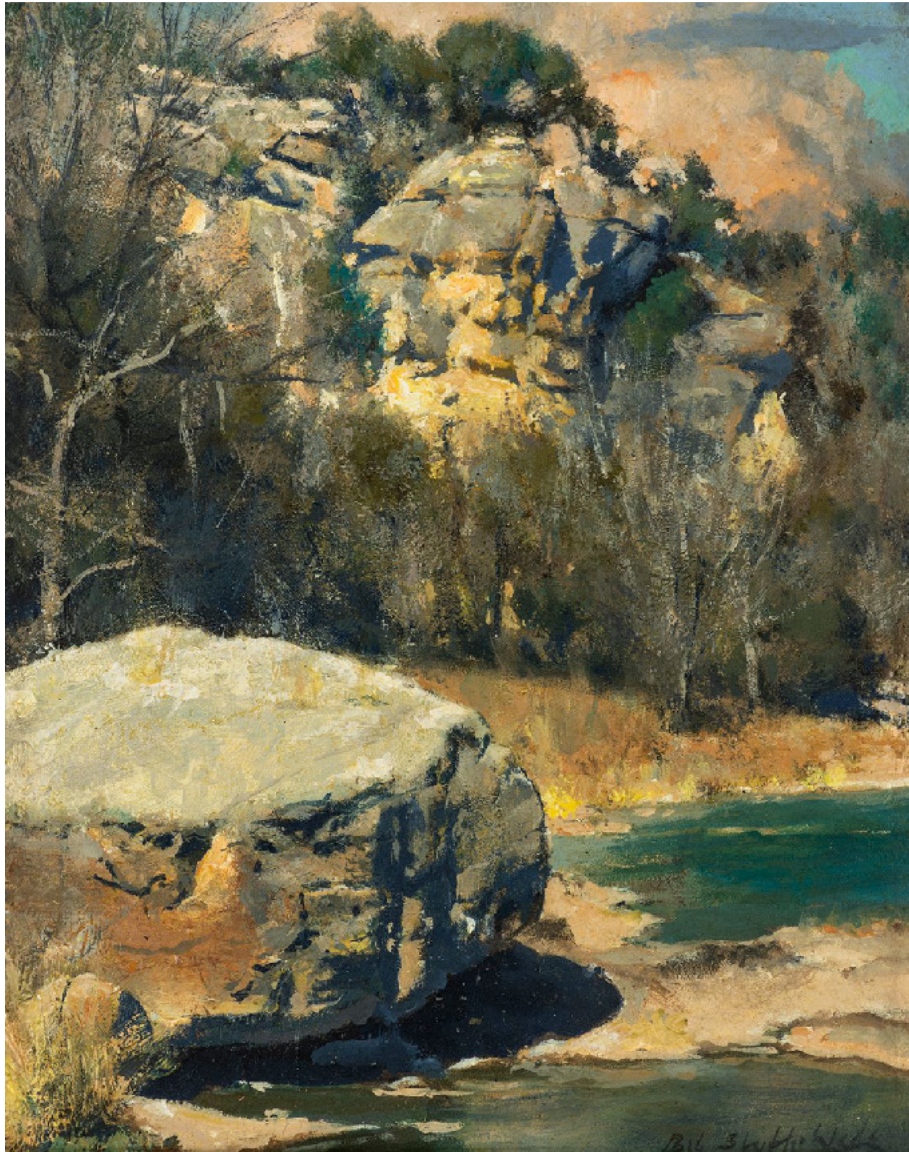
Bob Stuth-Wade
Forgotten Tree, 2020
oil on panel
12 x 8 inches



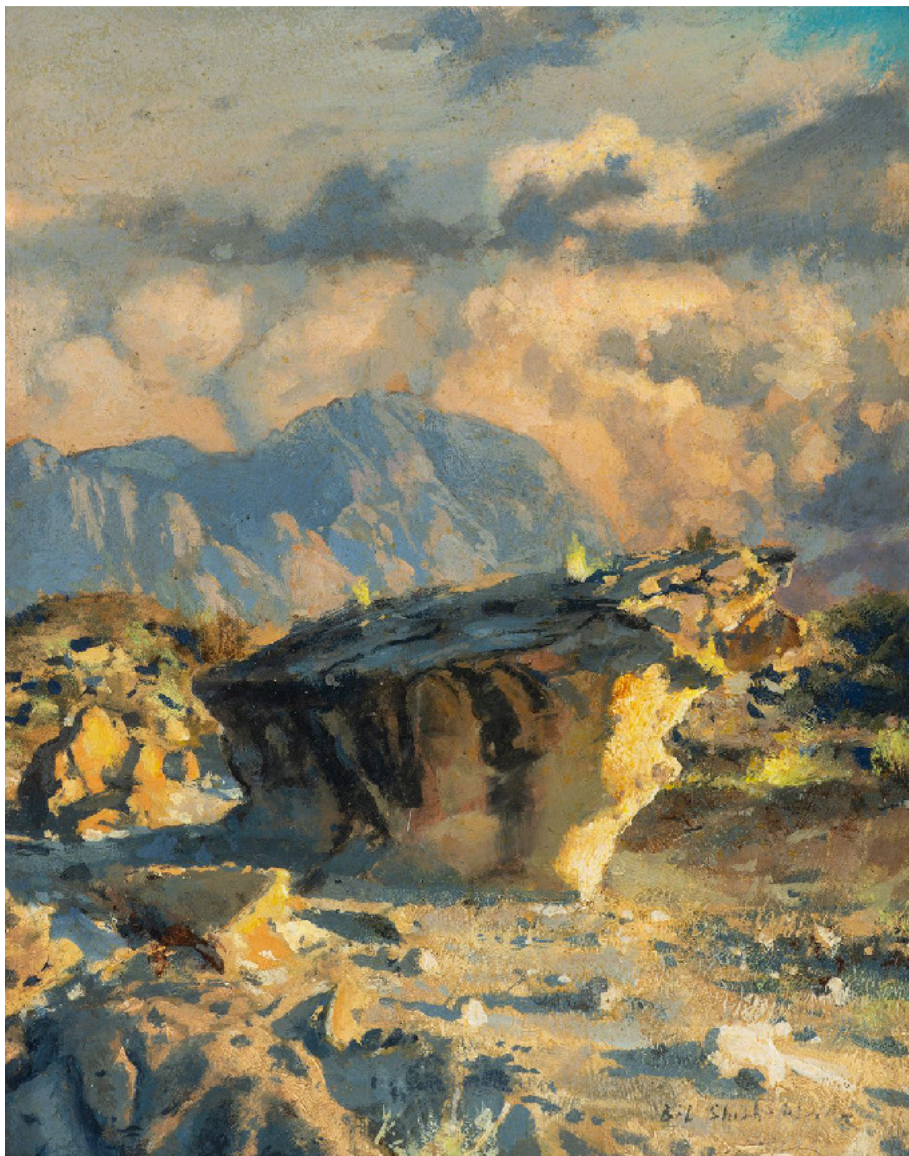
Bob Stuth-Wade
Ojai, AM, 2024
watercolor on paper
11 3/8 x 8 3/8 inches



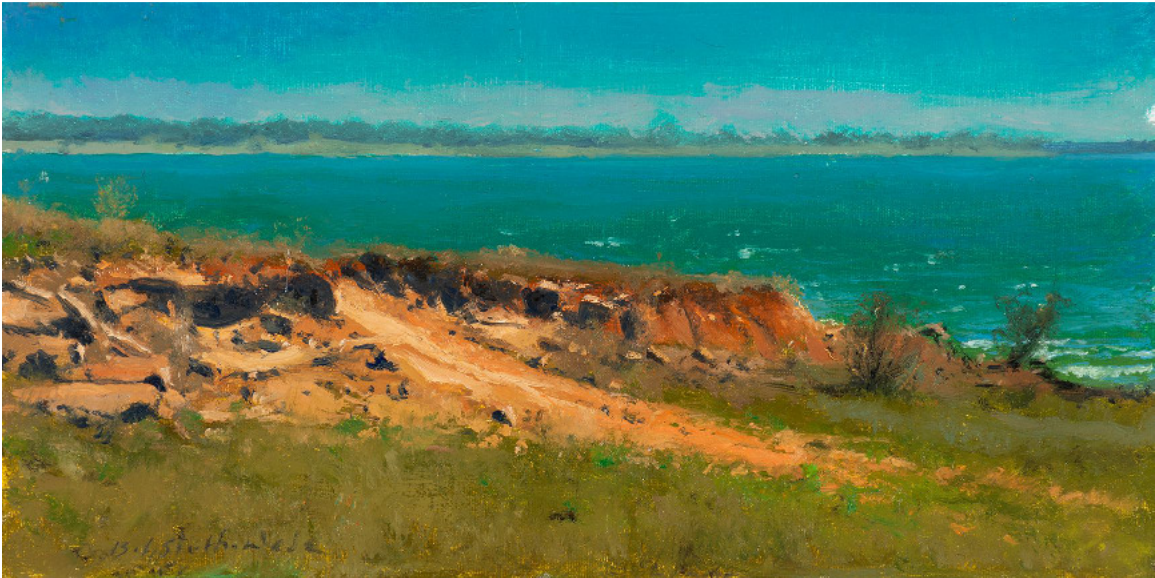
Bob Stuth-Wade
Lonely Stones, 2022
oil on linen panel
8 x 10 inches



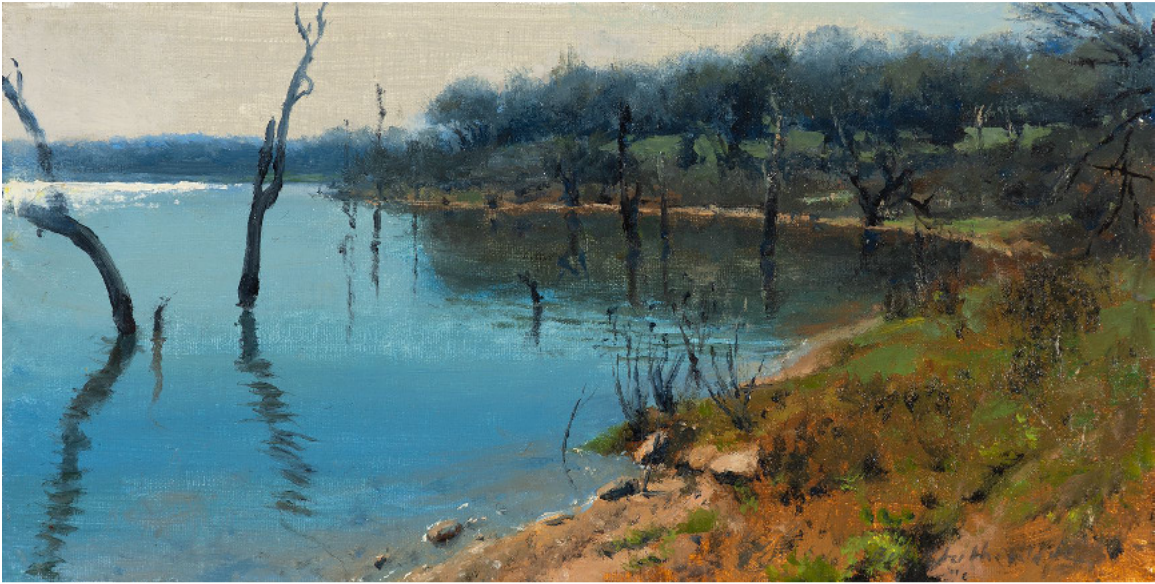
Bob Stuth-Wade
Stone and Buck Point, 2023
glazed gouache on panel
10 x 8 inches



Bob Stuth-Wade
Buffalo Rock, 2023
glazed gouache on panel
9 7/8 x 8 inches



Bob Stuth-Wade
Road Below Jimmy E., 2022
oil on linen panel
6 1/8 x 12 inches



Bob Stuth-Wade

Late Afternoon, Backside Proctor, 2022

oil on linen panel

6 1/8 x 12 1/8 inches



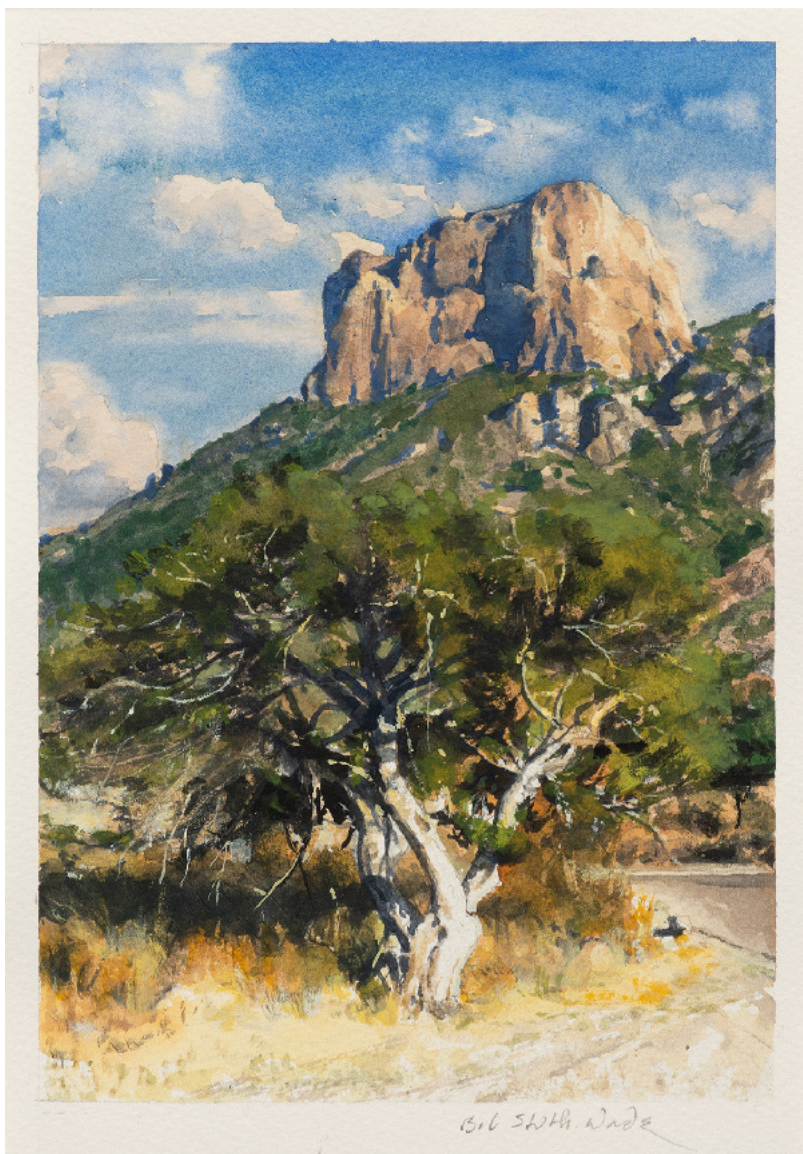
Bob Stuth-Wade
Low Water Crossing, Motheral Ranch, 2025
oil on panel
7 1/4 x 9 3/16 inches



Bob Stuth-Wade
March Clouds, Dublin City Park, 2025
oil on panel
7 1/8 x 9 1/8 inches



Bob Stuth-Wade
Las Tres Gunas, Looking North, 2023
watercolor on paper
6 1/2 x 9 3/4 inches



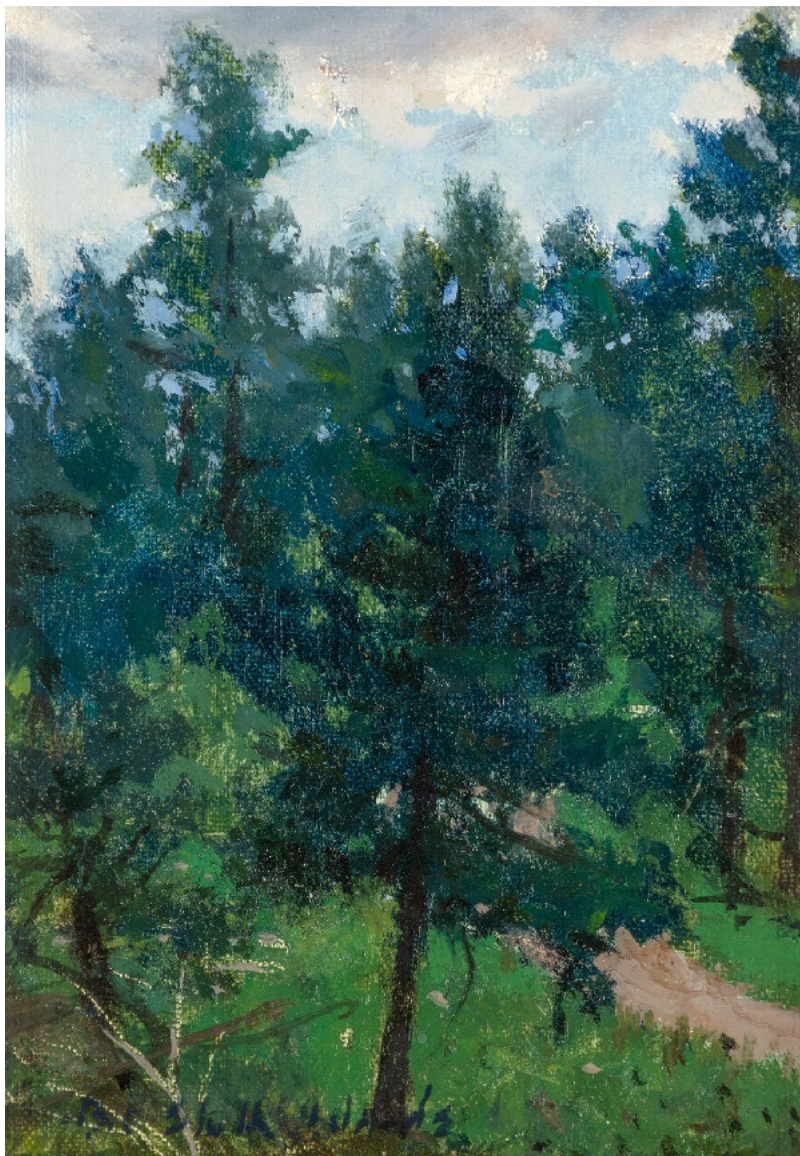
Bob Stuth-Wade
Casa Grande from Basin, 2024
watercolor on paper
9 x 6 5/16 inches



Bob Stuth-Wade
Fishing Spot, Proctor, 2022
oil on linen panel
6 x 8 inches



Bob Stuth-Wade
Near the Bunk House, 2022
oil on panel
5 1/2 x 7 1/2 inches



Bob Stuth-Wade
Below Camp, G.O.C., 2022
oil on linen panel
7 x 5 inches



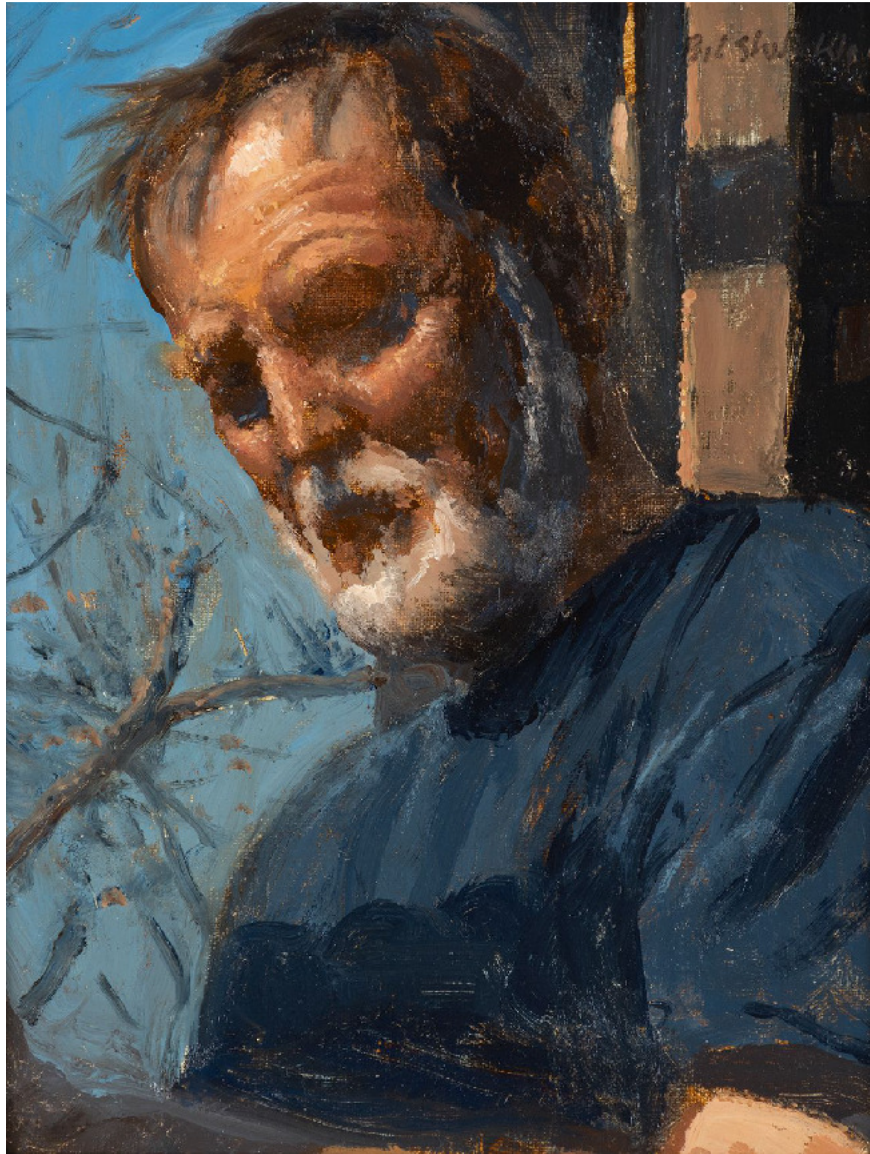
Bob Stuth-Wade
On the Easel, 2024
oil on linen
41 x 26 inches



Bob Stuth-Wade
Bonsai in a Bowl, 2024
oil on canvas
14 1/8 x 11 inches



Bob Stuth-Wade
Just Turnips, 2024
oil on canvas panel
10 x 10 inches



Bob Stuth-Wade
Self-Portrait, Windy Day, 2021
oil on linen panel
10 x 8 inches